



QForm Extrusion Seminar. Moscow

6 June 2018

Profile extrusion simulation.
Effective solutions and latest developments

We are glad to invite everybody who is interested in extrusion simulations
to participate in the seminar

Location and contacts:

The International Conference and
Exhibition «Aluminium-21/EXTRUSION»
Palmira Business Club Hotel
117105, Russia, Moscow,
Novodanilovskaya embankment 6,
+7 (495) 747-59-63

Diana Agleeva
Tel/Fax: + 7 (495) 785 20 05
conference2@apral.org

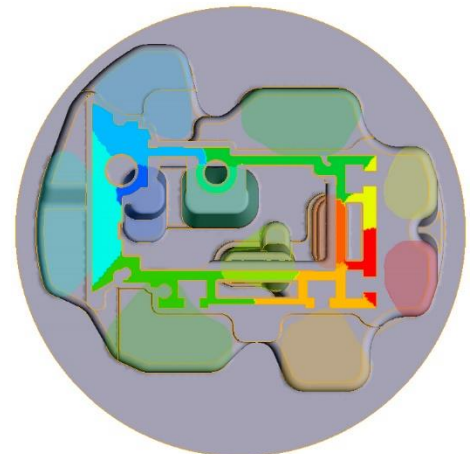
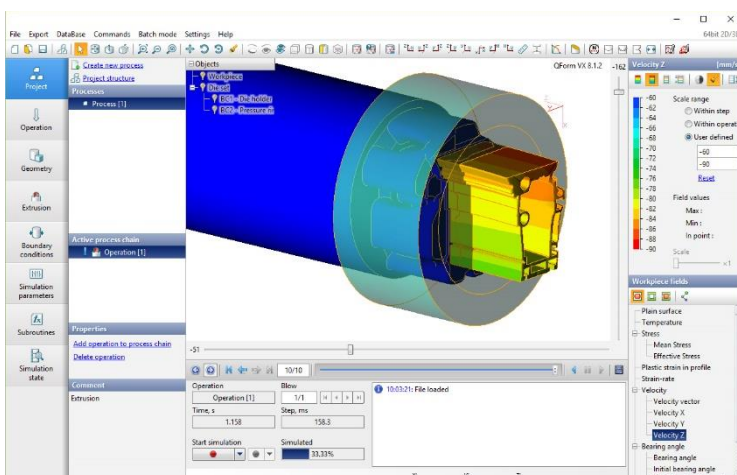
For the participants of the conference attendance of the seminar is FREE

Conference registration fees: www.eng.apral.org/Registration

Send your registration requests to conference2@apral.org

Recommendation:

For more effective participation in the seminar, please, bring your laptops with you to be able to simulate interesting projects during the event and to get new simulation skills.



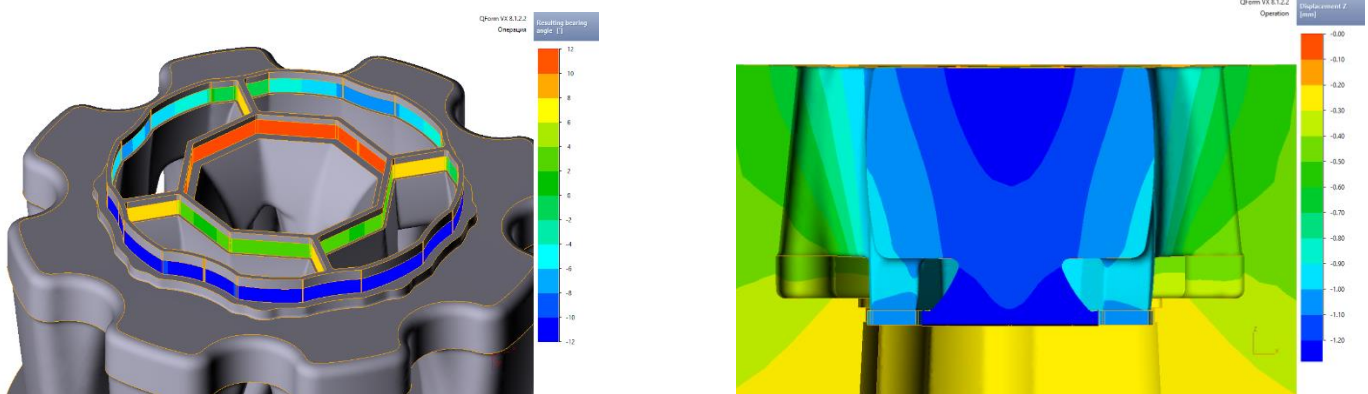
Profile quality analysis

*This leaflet is provided for general information purposes only and may be subject to change without notice.
Date of issue: 5 June 2018*

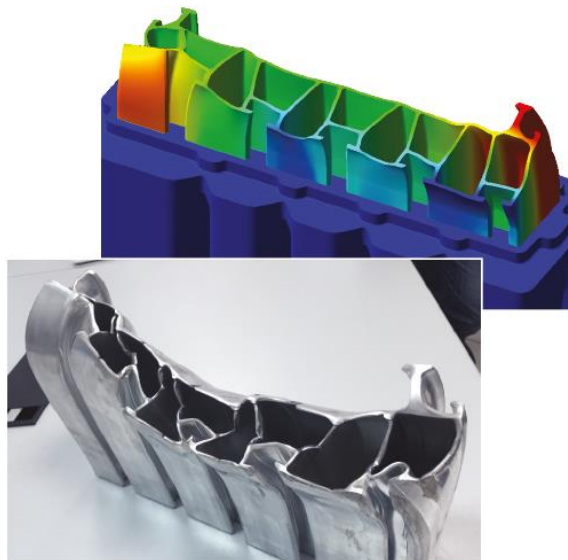
PRELIMINARY PROGRAM

Language – Russian, English

14:00	Welcome of participants <i>Mr. Sergey Stebunov, CEO, QuantorForm Ltd.</i>
14:10	Examples of the effective use of QForm. Comparison of simulation and experiment <i>Mr. Ivan Kniazkin, Leading engineer</i>
14:30	Industrial experience: Extrusion die workshop created from scratch <i>Mr. Alexander Terekhov, leading engineer, «LPZ «SEGAL» Ltd.</i>
14:50	Economic aspects of simulation software implementation <i>Mr. Stanislav Kanevskiy, Business development manager</i>
15:00	QForm Extrusion Die Designer (QExDD) <i>Mr. Alexey Duzhev, Head of QExDD development</i>
15:15	QForm Extrusion case study with results analysis <i>Mr. Ivan Kniazkin, Leading engineer</i>
16:00	Simulation of aluminium profile heat treatment <i>Mr. Andrey Shitikov, Developer</i>
16:15	Individual demonstration, training and discussion



Tool stress and coupled deformation analysis



Identical practical and simulation results